

Consulting Engineering Services

N. E. Parrott Surveys Ltd.

FIRST SCANNER

For
INFRASTRUCTURE
Development

Compact, all-in-one design

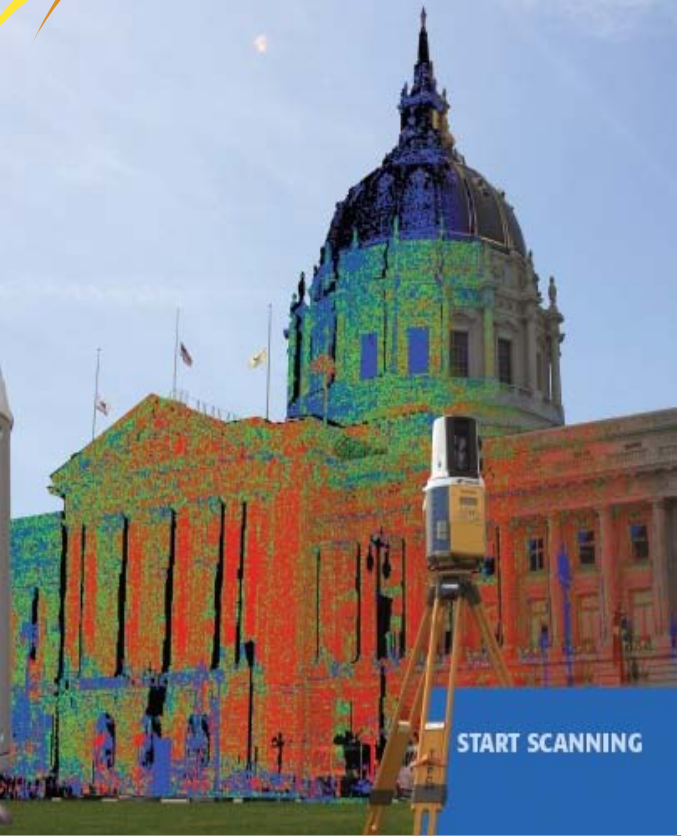
- On-board, hot swappable batteries
- Built-in digital camera
- Built-in WLAN
- Standard tribrach mounting

Precise Scan technology

- Cleanest, most accurate data
- Best for flat surface, textures, and long distances
- Eye safe, invisible, Class 1 laser

High Accuracy

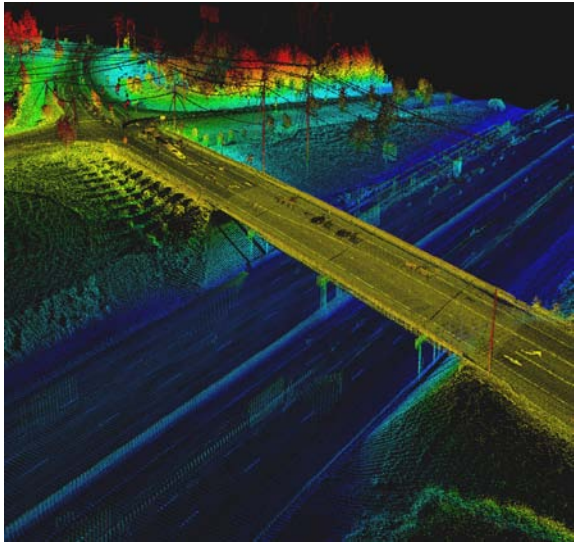
- 4mm accuracy through entire scan range
- Scan range from 1 to 330 meters
- 6 second angle accuracy
- Occupancy and Backsight functionality



START SCANNING

Subdivision Development
Pavement Information
Road Maintenance
Facilities Mapping
Asset Mapping
Feasibility Study
Detail Drawings
Utility Mapping
Site Survey
Hydraulics

N. E. Parrott Surveys Ltd.



N. E. Parrott Surveys Ltd. Infrastructure Mapping

Connecting your business to resources you need

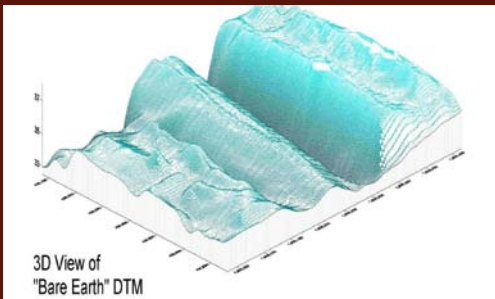
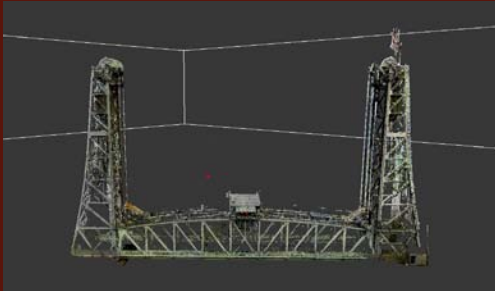
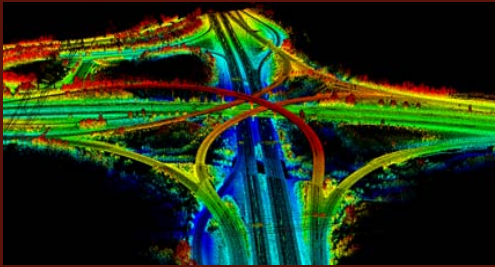
- Map road furniture & inventory all municipal assets.
- Generate preliminary and detail drawing.
- Generate site survey plans. Derive construction information from models.
- Check attributes and tag assets with geospatial location.
- Do your due diligence and feasibility study. Right of way information included.
- Good for utility mapping and inspection. Easy to detect encroachment.
- Easy to generate hydrologic and hydraulics information.
- Easy to used for road and pavement maintenance program.
- Create coordinated, digital design information and documentation.
- Visualize, simulate, and analyze performance, appearance and cost.
- Deliver the project faster, economically and with reduced environmental effect.
- Exporting data in a variety of industry standard file formats, including Autodesk AutoCAD and Bentley's Microstation, Civil3D, Kubit, etc.
- Speed up design to construction process with reduced errors & omissions.
- Reducing risk and liability as mistakes found in office not field
- Labels updated automatically; "What you see is what you get"

- **Deliverables :**

Line work, 3D Model, Polylines, Features, Assets, Street Furniture, Planes, Edges, Cross-sections, Mesh, Features, Angles, Lengths, Heights, Volume, Vectors, Annotation, Colour 3D point cloud, Break Lines, Ground, Non-Ground, Surface Grid, Hill-shades, Draped Imagery, Contours, Intensity, Texture, Layers, DTM, Classified points, Assets, Dimensions, Line of sight, Fly Through, Projection, etc

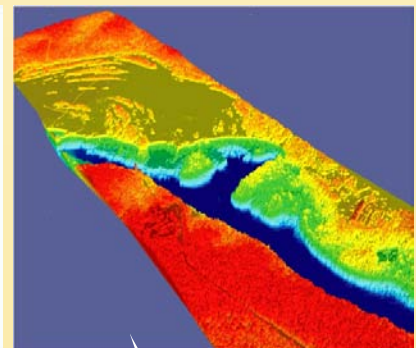
- **Format:**

DXF, DWG, DGN, SHP, XML, PTS, PTC, PTX, ASCII, LAS, GeoTIFF, ESRI, USGS DEM, FLT etc



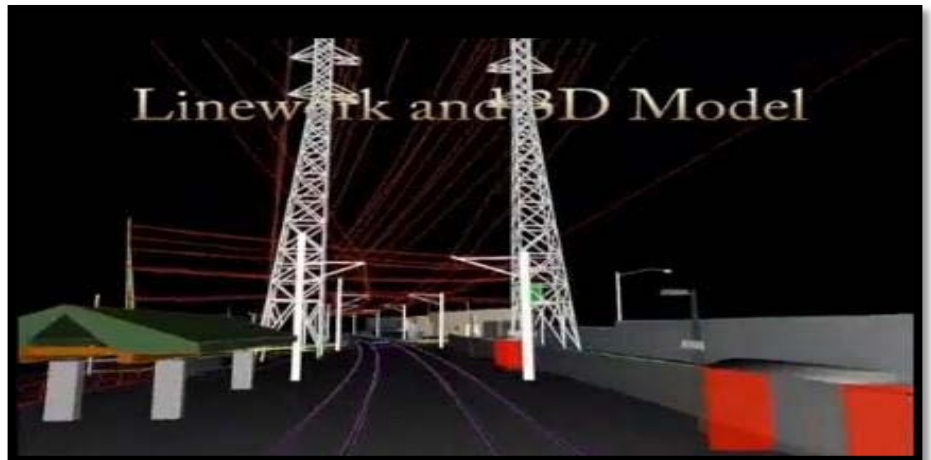
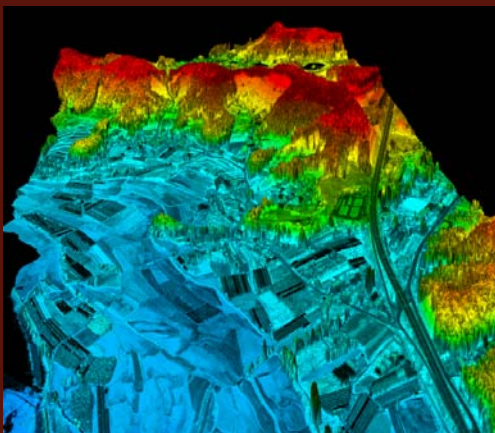
Survey – Topography

GLS-1000 PROVIDES TOTAL END TO END SOLUTION

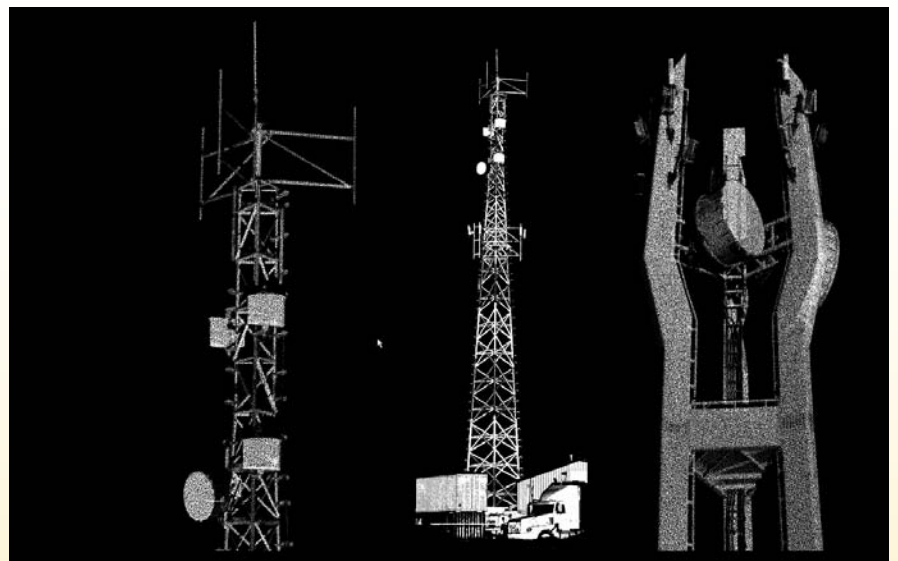


BUSINESS SOLUTIONS

- Subdivision Development
 - Feasibility Study
 - Site Survey
 - Utility Mapping
 - Road & Pavement information
 - Detail Drawings
 - Hydrologic & Hydraulics
 - Asset Management
 - Storm Water Management
 - Building Construction
 - Excavation Volumes
 - Façade and Structural Deformation
 - Crime Scenes
 - Accidental Details
 - Topographic Survey
 - Road design and Maintenance
 - Railway Design
 - Hydrology & Hydraulics
 - Disaster Management
 - Bridge Safety
 - Telecommunication
 - Power Line
 - Home land Security
 - Irrigation
 - Earthwork volumes
 - Alignment
- GIS



Mapping- Power Lines & Telecommunication



Mapping- Roads



Mapping- Railways



Mapping- Real Estate

Benefits:

- Design Visualization
 - Visualize prior to contract award to accelerate understanding of design intent
- Design Validation
 - Integrate 3D models of all trades to identify interferences and constructability issues before they materialize in the field
- Estimating
 - Pre-construction derive quantities and associate to a project cost item; Assist in procurement (e.g. rebar fabrication, concrete formwork, etc.)
- Scheduling
 - Visualize construction process to review and optimize construction sequencing ; Manage field design changes and RFI's more efficiently
- Enterprise Solution
 - Different layers of information provide solutions for company wide application. Whether it is heating, piping or electrical designer they all tap into the same data base.
 - Easy reporting for your client and for internal audit.

CONSULTATION

N. E. Parrott Surveys Ltd. provides state of art technology and qualified technical staff to support you. Please speak to one of our representative about your project.

N. E. Parrott Surveys Ltd.

340 Hamilton River Road, Happy Valley Goose Bay, NL, A0P 1C0
121 Matthew Avenue, Labrador City, NL, A2V 2A2

Tel: 709-896-5019, 709-944-5222

Fax: 709-896-9439

Email: nepsl@nf.sympatico.ca, Janeil.nepsl@gmail.com

Web: www.neparrottsurveysltd.com